



Department of Music

Fall 2025 Concert Ensemble Audition Information

Auditions will take place the week prior to classes August 18-19, 2025 (exact schedule coming soon) in the Wilbur A. Ball Performing Arts Center.

Tips

Engaging in practice with a metronome and tuner is highly recommended. Demonstrating strong rhythmic skills is essential for success in an ensemble audition. Your accuracy, tempo selection, consistency in tempo, and ability to subdivide are crucial elements for effective collaboration with other musicians.

The quality of your tone will be the first impression noted by the panel, which can significantly impact their evaluation. It is important to dedicate sufficient time to developing your fundamental skills and to consistently aim for an exemplary sound during practice sessions.

We take great pride in all our ensembles, and we are confident that you will have a rewarding experience that reflects your level of ability.

- Wind Ensemble M/W/Th 1:00 – 2:55
- New Horizons Band Fri 9:45 – 11:30
- McLennan Community Orchestra Thu 7:00 – 9:00

Communicate with your MCC Studio Faculty with any questions you may have.

Director of Bands: Dr. Jon Conrad, jconrad@mclennan.edu

Flute: Prf. Masha Popova, mpopova@mclennan.edu

Oboe/Bassoon: Prf. Tristen Collinsworth, tcollinsworth@mclennan.edu

Clarinet: Dr. Vanessa Davis, vadavis@mclennan.edu

Saxophone: Prf. Matthew Singletary, msingletary@mclennan.edu

Horn: Dr. Kimberly Hagelstein, khagelstein@mclennan.edu

Trumpet: Prf. Mark Schubert, mschubert@mclennan.edu

Trombone: TBA

Euphonium/Tuba: Dr. Clayton Garrett, ctgarrett@mclennan.edu

Percussion: Prf. Jonathan Kutz, jkutz@mclennan.edu

Bass: Dr. Peter Olson, polson@mclennan.edu

Piano: Dr. James Pitts, jpitts@mclennan.edu

To Have A Successful Audition:

- 1) Download and prepare the etudes available on the McLennan Bands webpage.
- 2) Register for an audition time through the McLennan Bands webpage.
- 3) Complete the personnel information form on the McLennan Bands webpage.

Good Luck!

V
Soliloquy

Slowly
Solo

mp dolce

10 15

p *espress.*

20 25

cresc. *mp*

30 35

mp p mf dolce p pp

VI
March

Spirited

4 5 4 10 15 20 25 30 35 40 45 50 1 4 55 60 65 3 70 75 80

2nd Time to Coda

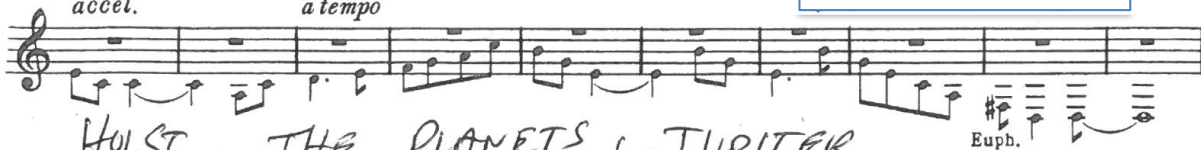
Coda

TRUMPET AUDITIONS

SOLO & 1ST BY CORNETS

accel.

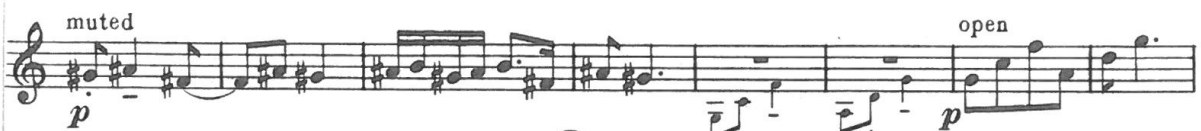
a tempo



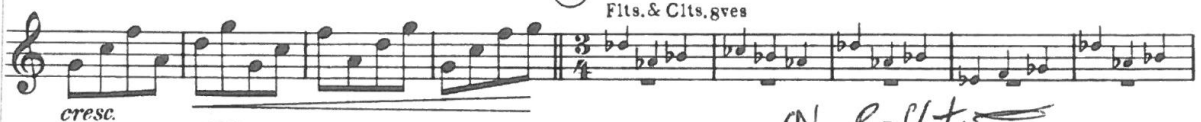
HOLST, THE PLANETS: JUPITER



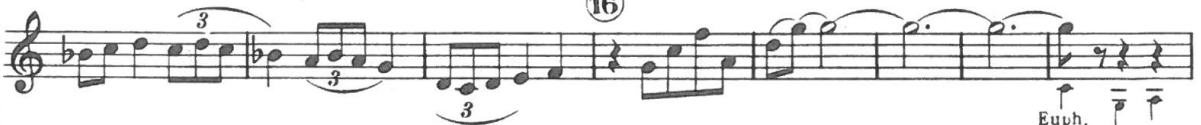
14



15



16



17

Lento maestoso



Presto



Trumpet 1 B \flat

Pini di Roma

II. Pini presso una catacomba

1 Lento $\text{♩} = 50$

4 3 3 4 4 4 4 4 4 4

17 più mosso $\text{♩} = 60$
solo il più lontano possibile
f ma dolce ed espressivo

3 3 3 3

22

3 3 3 3

28 Ancora più mosso $\text{♩} = 69$

3 3 3 3 3 3 3 3 3 3 3

f

40

3 3

42

3 3

44

3 3

f *mf* *dim.*

48

3 3 3 3 3 3 3 3 3 3 3

53 59 Più lento rall.